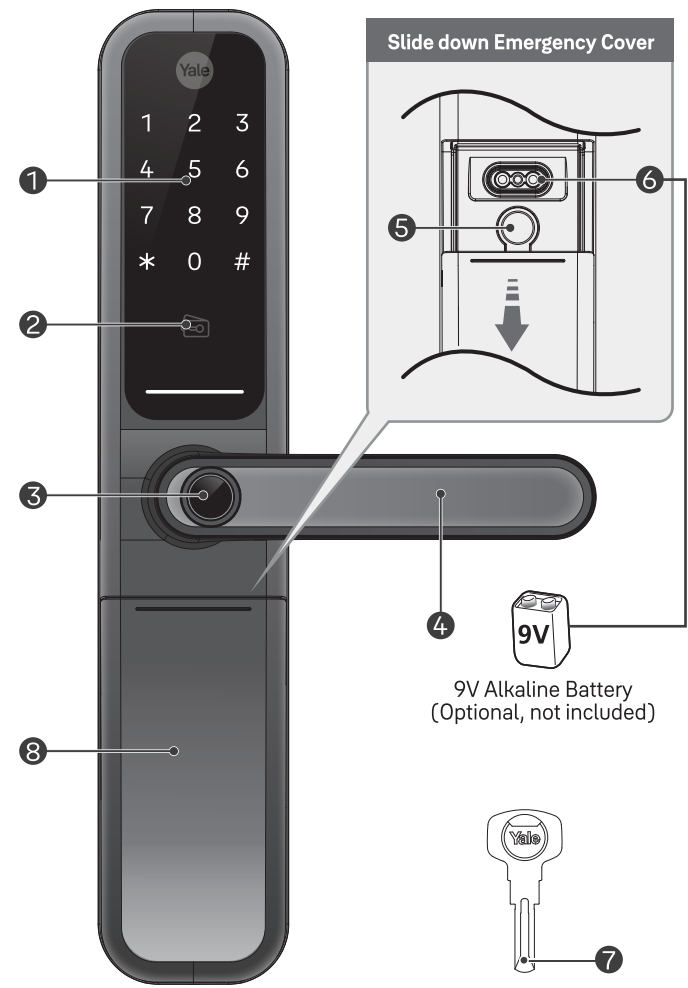
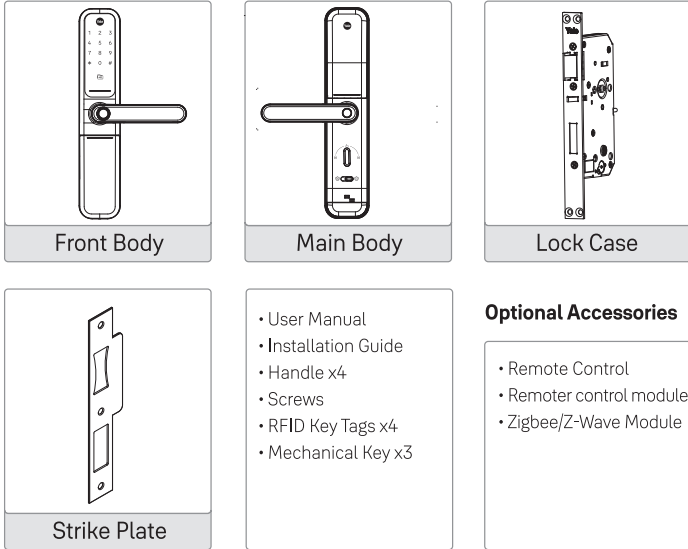


1. Front Body (Front Body, installation on the outside of the door)



2. Basic Contents

Basic Contents

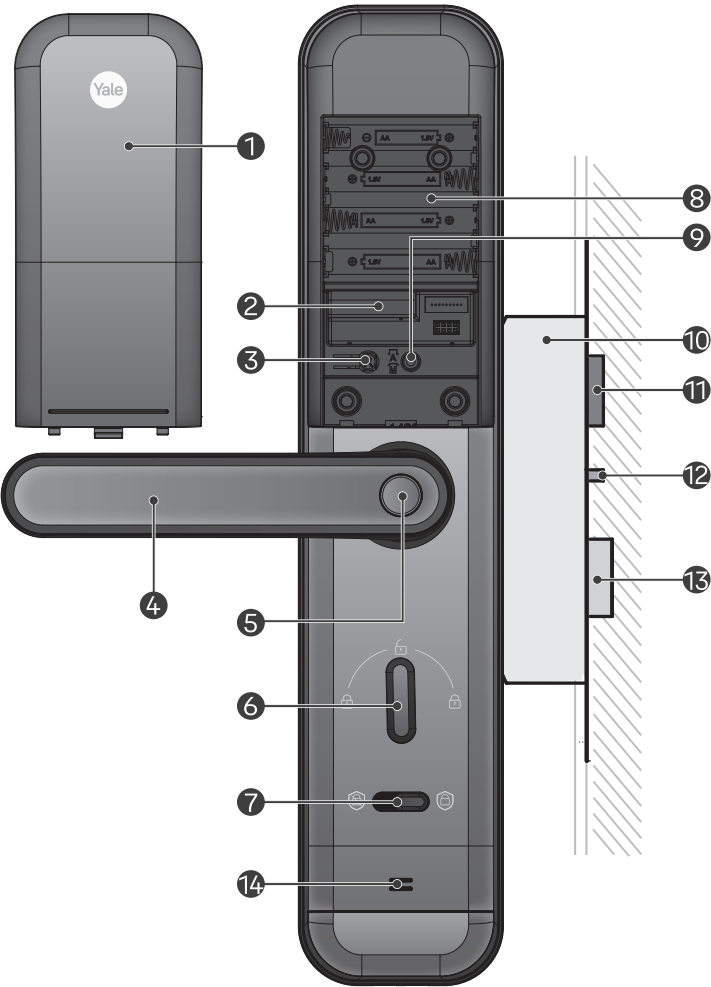


3. Specifications

Parts	Specifications	Remarks
Front Body	63(W) X 337.8(H) X 26(D) mm, AlDC	Operating temperature: -15~55°C (5~131°F)
Main Body	68(W) X 340(H) X 35(D) mm, PC	
Optional Accessories	Remote Control, Modules, Bridge, Hub, Etc.	

※ Battery life depends on factors like usage habits, temperature, humidity, and battery quality.
※ The availability of optional accessories varies based on your country or local dealers.
Contact your local dealer for details and support.

4. Main Body (Main Body, installation on the inside of the door)



5. Front Body

1	Keypad(10-key)
2	RFID Key Reader
3	Fingerprint Sensor
4	Lever Handle
5	Cylinder Key Hole
6	Emergency Power Supply Terminal
7	Mechanical Key
8	Cover Slide

6. Main Body

1	Battery Cover
2	Module Accessory Slot (Optional)
3	Registration button
4	Lever Handle
5	Safe Handle Button
6	Manual Thumb Turn
7	Internal Forced Lock Switch
8	1.5V AA Alkaline Batteries (4PCS)
9	Auto/Manual Lock Button
10	Lock Case
11	Latch Bolt
12	Automatic Locking Sensor
13	Deadbolt
14	Speaker Hole

7. Setting Menu

User Pin-Code

- U** Enter User Code (6 digits Only)
The User code is used for unlocking the lock. (Up to 100 Users)
- A** Enter Administrator Code (6 digits Only)
The Administrator code is required for setting up the features.
- O** Enter One-time Code (6 digits Only)
The One-time code is used for unlocking the door lock.
It will be automatically deleted once it is used.
- UN** User Slot Number (2 digits only)
'01' for user slot number 1, '02' for user slot number 2.
'00' for user slot number 100

Alternative Credentials for Authentication

- F** Enter User Fingerprint (Up to 100 Users)
- C** Enter User RFID Key Tag (Up to 100 Users)
- R** Press **R** (Registration) button in every steps to start or complete the session

Etc.

- F** Touch the Keypad of the Front Body with your palm to begin
- Rotation area** to add more features.
- * , #** Press ***** , **#** button on the Keypad

8. Product Features

- One-Touch Fingerprint Access**
A single touch unlocks with your fingerprint, ensuring both top-tier security and swift entry.
- Yale Home App**
Control everything and feel confident about the safety of your loved ones and belongings, wherever you are, with a simple touch on your smartphone .
- One-Touch Relock**
A single touch of your palm on the keypad to lock the door.
- 3 minute Lock Out Feature**
After five (5) unsuccessful attempts of an invalid code or RFID key tag or fingerprint, lock out mode is activated for 3 minutes.
- Smart Etiquette (Silent Mode)**
Activate silent mode to unlock the product silently (voice notification muted).
- Fake PIN Code**
Security enhancement to enter any number before or after entering a password to prevent the PIN code from being exposed.
- Internal Forced Lock**
It is a security-enhancing function that 'disables' authentication methods such as passwords, RFID key tags and fingerprints from outside when setting up functions indoors.
- External Forced Lock**
It is a security-enhancing function that an alarm goes off if someone opens door from inside when External Forced Lock is active.
- Voice Guidance**
Effortlessly directs you through enabling different features and settings, ensuring an even simpler and more convenient user experience.
- Other features and Benefits**
 - Remote Controller (Optional)
 - Network Module / Controller (Optional):
Enables seamless integration with selected smart home controllers.
 - Intrusion / Tampering Alarm.
 - Low Battery Alarm and Emergency Power Supply.

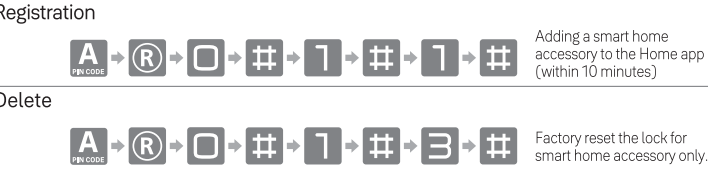
9. Advanced Mode

- The ByYou series smart lock operates under Advanced mode only.
- Advanced mode is a mode in which only the administrator can set the door lock and provide access to other users. 100 users passwords, 100 users RFID key tags, 100 users fingerprint and individual registration and deletion of one-time passwords enable efficient management of visitors.
- Kindly ensure the secure storage of the administrator code. In the event of its loss, a factory reset (hard reset) is required.
(Please contact our customer service for more information)

1	14 (Registration process)	* Continue / (R) Complete													
1	2	3	4	5	6	7	8	9	10	11	12	13	14		
Register Administrator Code (Use during initial registration or after a factory reset)															
Registr-ation	(R)	A	#	A	#										
Only 1 User															
Changing of Administrator Code															
Registr-ation	A	(R)	1	#	A	#	A	#	*	OR	(R)				
Up to 100 Users															
Registr-ation	A	(R)	2	#	1	#	UN	#	U	#	*	OR	(R)		
Delete	A	(R)	3	#	UN	#	*	OR	(R)						
Fingerprint															
Registr-ation	A	(R)	3	#	1	#	1	#	UN	#	F	#	*	OR	(R)
Delete	A	(R)	3	#	UN	#	*	OR	(R)						
RFID															
Registr-ation	A	(R)	3	#	2	#	1	#	UN	#	C	#	*	OR	(R)
Delete	A	(R)	3	#	2	#	3	#	UN	#	*	OR	(R)		

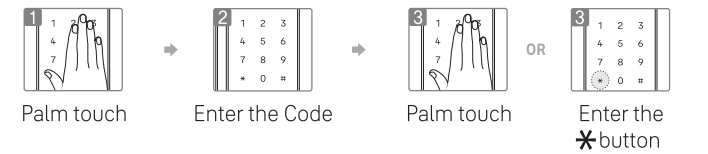
Onetime Code															
Only 1 User, Automatically deleted after use															
Registr-ation	A	(R)	4	#	1	#	0	#	*	OR	(R)				
Delete	A	(R)	4	#	3	#	A	#	*	OR	(R)				
Delete all credentials															
Delete	A	(R)	5	#	A	#									
Volume Control															
High					1	#	*	OR	(R)						
Low	A	(R)	6	#	3	#	2	#	*	OR	(R)				
Mute					3	#	*	OR	(R)						
Language Change															
Registr-ation	A	(R)	6	#	5	#	3	English	#	*	OR	(R)			
							4	Taiwanese	#	*	OR	(R)			
Bluetooth Setting (Yale Home App)															
Registr-ation	A	(R)	7	#										Activate Bluetooth Feature	
Remote Controller															
Up to 5 Users															
Registr-ation	A	(R)	8	#	1	#	UN	#	SET Button	#	*	OR	(R)		
Delete	A	(R)	8	#	3	#	UN	#	*	OR	(R)				
Home Network Controller															
Registr-ation	A	(R)	9	#	1	#	Cont roller	#	*	OR	(R)				
Delete	A	(R)	9	#	3	#	A	#	*	OR	(R)				

※ Apple Home Setting in the Lock

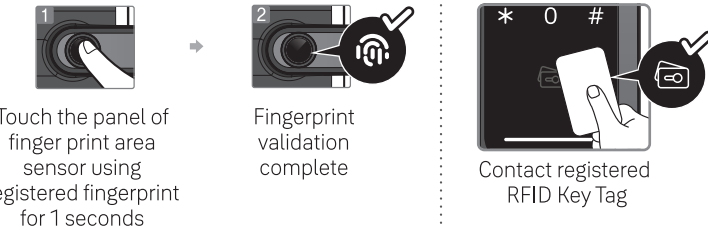


- Firstly, to enable the Apple HomeKit function, please ensure you follow the lock registration process for the Apple HomeKit settings, as shown in the manual.
- After completing the registration process (A->R->0->#>1>#>1>#), the Yale Lock will be able to activate for 10 minutes to pair with your Apple phone for HomeKit activation mode of the Apple Home app.
- If you proceed with menu 3 (delete) during the setup process, a HomeKit factory reset will be initiated, and it will no longer be possible to link with the Apple app afterward.
- In the case of the Homekit, the factory reset is possible through the Apple HomeKit app even if the BLE is not connected.
- After performing the factory reset in Apple HomeKit, if you want to use HomeKit again, you must follow the delete (menu 3) and registration (menu 1) steps in the lock settings.

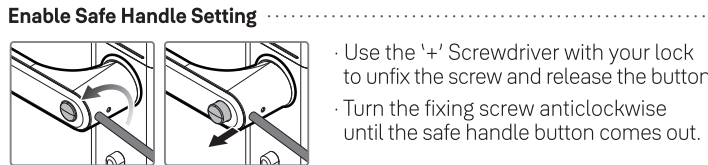
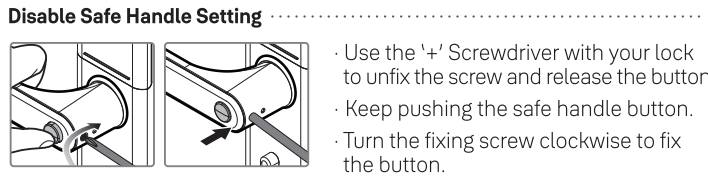
10. Unlocking Door with Code



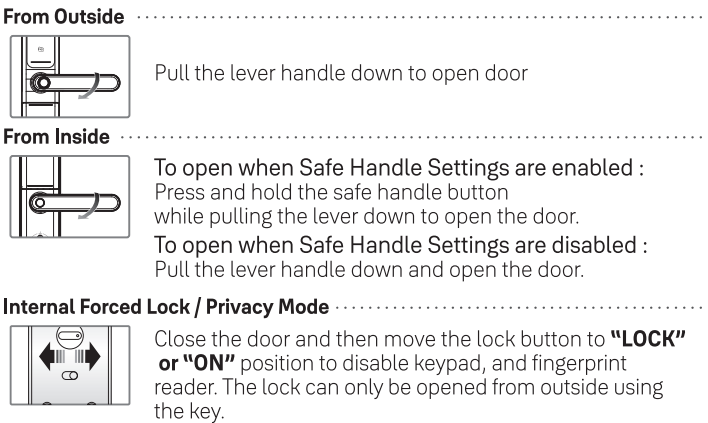
11. Unlocking Door with Fingerprint / RFID Key Tag



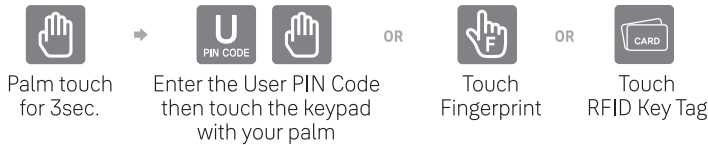
12. Safe Handle Feature



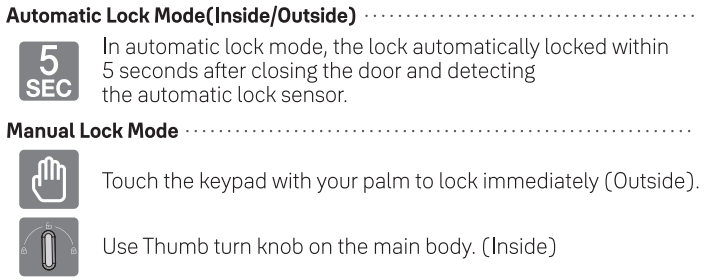
13. Open Door(Inside/Outside)



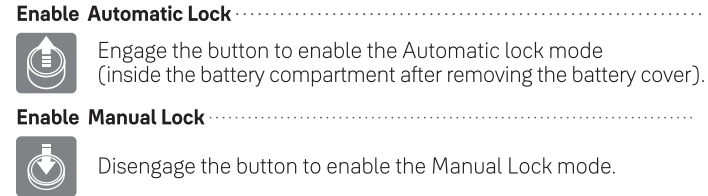
14. Unlock Door with Smart Etiquette



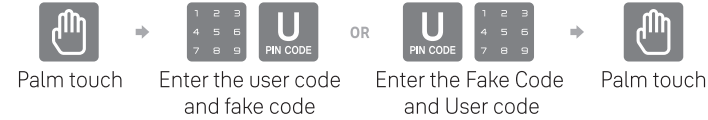
15. Lock the Door(Inside/Outside)



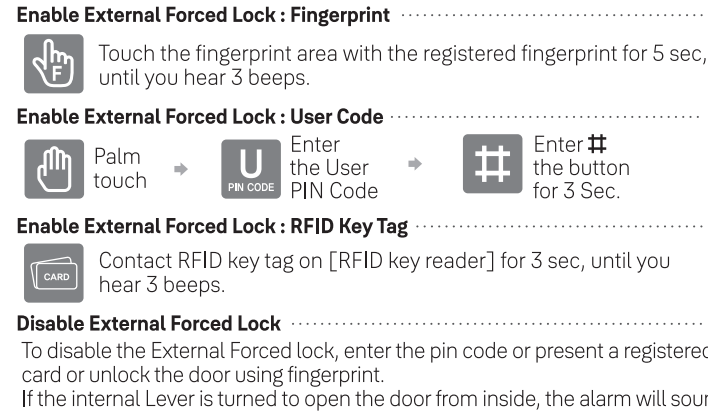
16. Automatic/Manual Lock



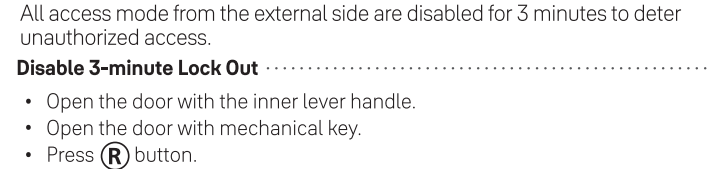
17. Unlock Door with Fake Code



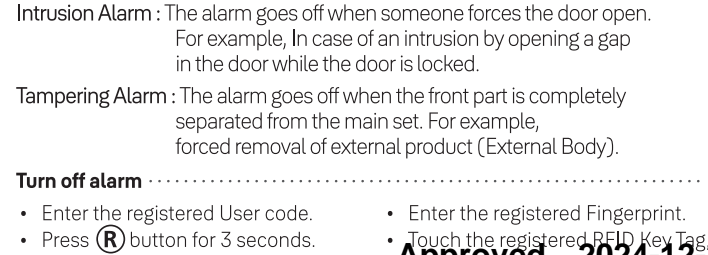
18. External Forced Lock



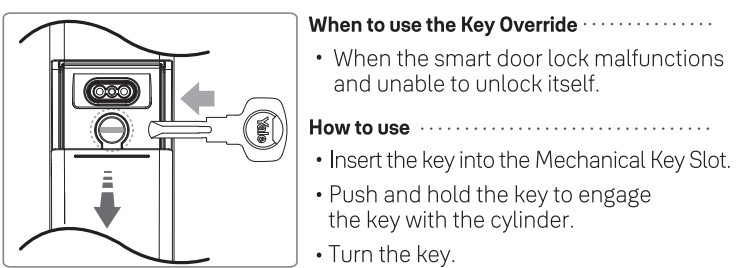
19. 3 Minutes lock out



20. Alarm



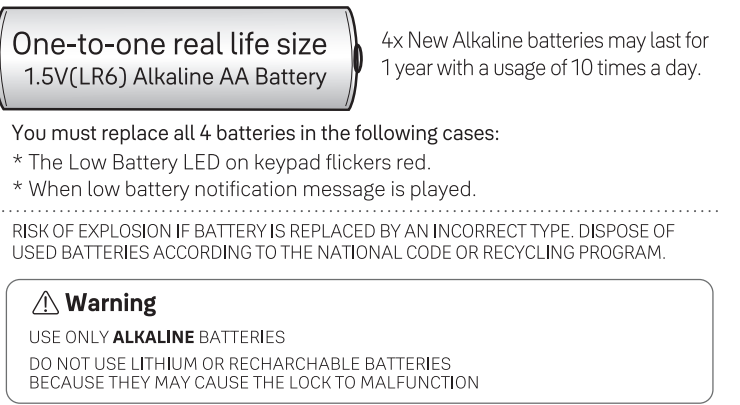
21. Emergency mechanical key override



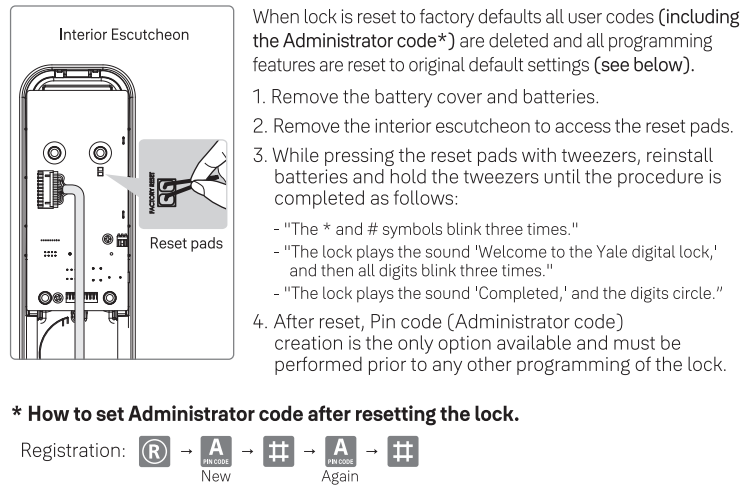
22. Emergency power supply for discharged batteries



23. Power supply



24. Resetting the lock to its factory default setting



25. Safety and Warning

- Kindly ensure the secure storage of the administrator code. In the event of its loss, a factory reset (hard reset) is required. (Please contact our customer service for more information)
- Do not install the digital door lock in an outdoor environment.
- Do not attempt to disassemble the digital door lock by your self. By doing so, you may get an electronic shock and damage the product.
- Do not use force with a tool onto the product.
- Make sure to lock the door tight when you go out.
- Do not use water and any type of solvent to clean the product such as gasoline or benzene as they can cause damage to electronic circuit, deterioration and or paint peel-off.
- It is recommended to change User Code on a regular basis.
- In manual lock mode, make sure to double check whether the door is securely locked.
- Do not use rechargeable batteries. Only alkaline batteries are recommended.
- Make sure to follow the above instructions to avoid any injuries.
- The performance of the product shall not be guaranteed under unintended conditions, including but not limited to instances of water condensation and applications in seaside environments.
- Warranty will not cover- exposure to dampness, excessive heat, excessive humidity and other extreme environmental conditions, corrosion, damage beyond repair, rusting, unauthorised modifications, unauthorised repairs, neglect, accident, alteration, acts of God, spillage of liquid or food particles.



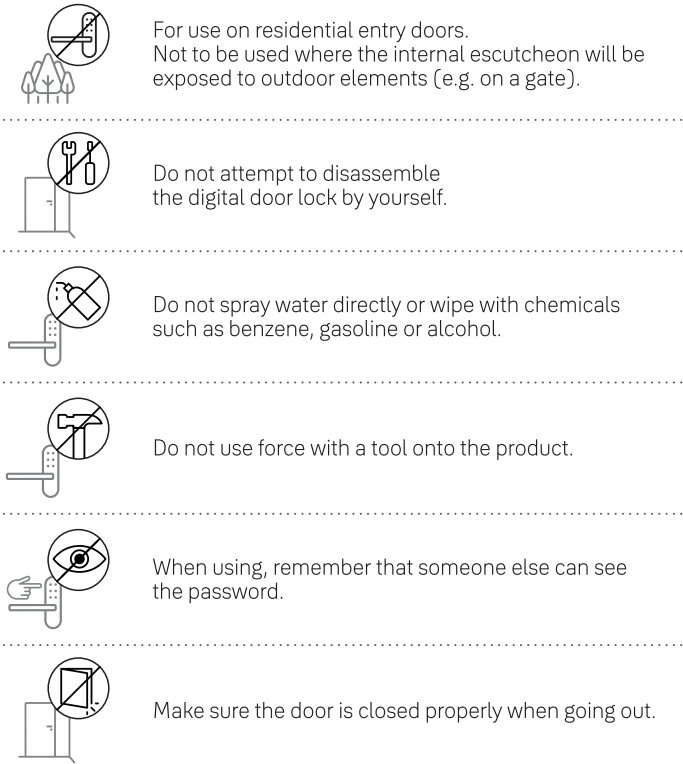
User Guide

ByYou Pro

RFID Key Tag / Fingerprint / PIN Code / Key / BLE

Part of ASSA ABLOY

Provisioning Label



To control this HomeKit-enabled accessory, the latest version of iOS or iPadOS is recommended. To use Home keys, iPhone XS or later with iOS 15 or later and Apple Watch Series 4 or later with watchOS 8 or later are required.

Warning : Changes or modifications to this device, not expressly approved by ASSA ABLOY Group could void the user's authority to operate the equipment.

PLEASE READ INSTRUCTIONS BEFORE USE.

The functions and design of this product can be changed without prior notice for performance and quality improvement.



ISL-2223-00-013 Ver.2