

Set up & Installation

Step 1:

Follow the door sensor installation instructions on this leaflet.

Step 2:

Plug in the Wi-Fi Bridge.

Step 3:

On the Freestyle app, go to:

[Settings >](#)

[Add New Device >](#)

[\[Choose your home or property\]](#)

The app will guide you through the setup process.





LET'S SEE IF IT WORKS.

Ensure your mobile Bluetooth is disabled. With the door open, try to unlock and lock via your app. If this works, you have completed the set up!

Enjoy your connected Gainsborough Freestyle lock.

If this did not work, retry the set up.

Getting to know the lights

 + Flashing	INITIALISING/SETTING UP
	ERROR
 + Flashing	NOT CONNECTED
	CONNECTED

HOW TO RESET:

- 1** First, delete the device from the app prior to performing the reset. Go to [Settings > Wi-fi Bridge settings > \[Choose your home or property\]](#) Delete the Wi-Fi Bridge.
- 2** Hold the centre button on the Wi-Fi bridge for 10 seconds.
- 3** Reset is complete when the light turns blue.

GAINSBOROUGH
freestyle

ELECTRICAL SAFETY INFORMATION

MODEL No.: GFS001WHV

FIRMWARE VERS.: 1.0

ALLEGION 

ALLEGION (AUSTRALIA) PTY LTD
PHONE 1800 098 094
gainsboroughhardware.com.au
ALLEGION (NEW ZEALAND) LIMITED
PHONE 0800 477 869
gainsboroughhardware.co.nz
31-33 ALFRED STREET,
BLACKBURN, 3130 VIC AUSTRALIA

MADE IN CHINA



Input: 100-240V /
50/60Hz / 70mA



Please recycle
this packaging

GAINSBOROUGH
freestyle



**WI-FI BRIDGE
AND DOOR SENSOR KIT
USER GUIDE**

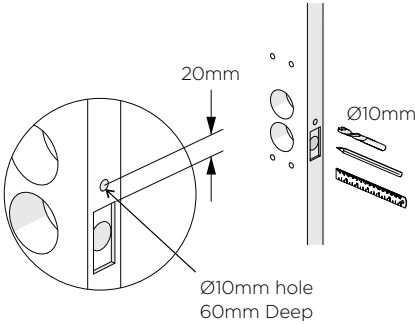
Door Sensor Installation

IMPORTANT: Remove Internal and External lockset escutcheons from the door prior to installation. Latch can remain in the door.

Step 1:

PREPARE DOOR

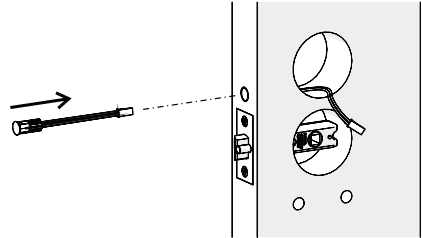
Drill a $\varnothing 10\text{mm}$ hole to a depth of 60mm in the side of the door as shown.



Step 2:

INSTALL DOOR SENSOR IN DOOR

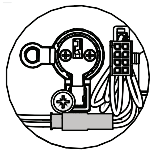
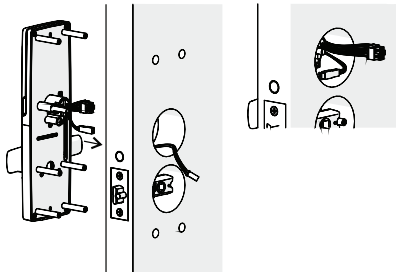
- 1 Insert Door Sensor cable through the $\varnothing 10\text{mm}$ hole.
- 2 Extend it through the $\varnothing 54\text{mm}$ hole.
- 3 Firmly press the magnet housing into the door edge until the front face is flush with the door edge.



Step 3:

CONNECT DOOR SENSOR

- 1 Connect Door Sensor cable to plug on the Main cable.



- 2 Ensure the cables are tucked in the $\varnothing 54\text{mm}$ hole alongside the cylinder, and are not in a position to be pinched during assembly of the Internal Furniture.

Step 4:

INSTALL DOOR POSITION MAGNET

- 1 Establish position of magnet such that it aligns with Sensor in door.
- 2 Drill a $\varnothing 10\text{mm}$ hole for the Door Position Magnet and fit magnet as shown.

