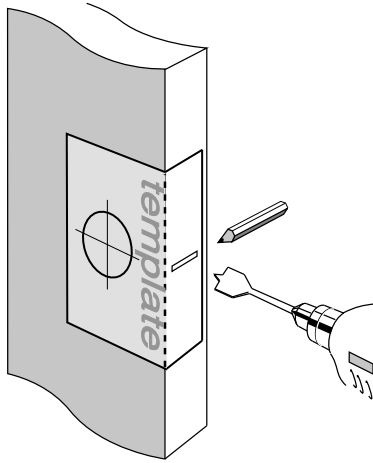


# Installation Instructions for 100 Series Passage Leversets on 63mm Round Rosettes with a 60mm backset

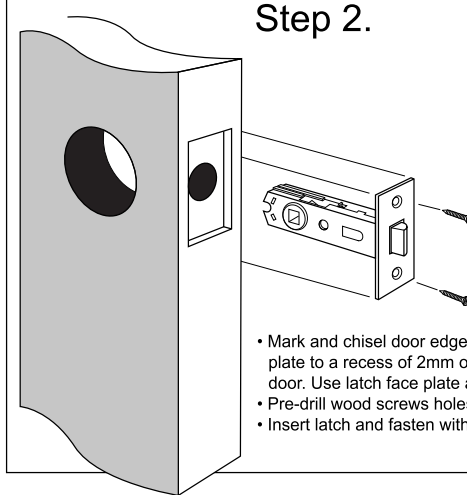
## Step 1.

- Fold template where indicated.
  - Position template on door edge at desired latch height.
  - Firmly hold template and mark latch height and handle fixing holes at required backset (refer template).
  - Measure door thickness and mark centre.
  - Drill 25mm (1") latch hole.
- Note: it is important to drill this hole squarely.
- We recommend: Drill a 50mm (2") hole through door face at required backset as marked on template.
- NOTE: Lever may be used on standard 54mm (2 1/8") door prep.



## Step 2.

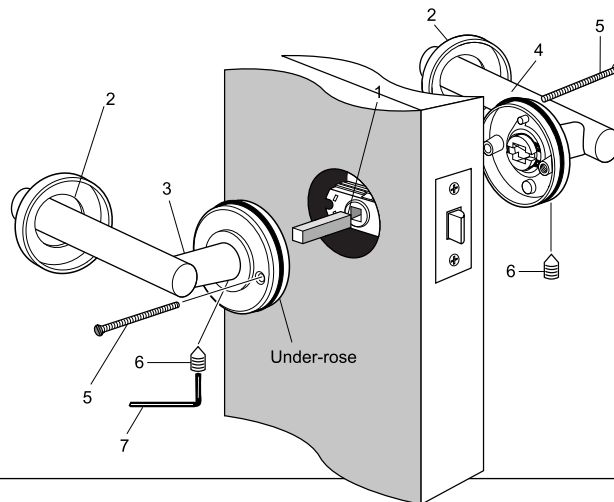
- Mark and chisel door edge for latch face plate to a recess of 2mm or until flush with door. Use latch face plate as a template.
- Pre-drill wood screws holes with suitable drill size
- Insert latch and fasten with wood screws provided.



## Step 3.

### Install lever assemblies to door

- Insert square drive spindle (1) through latch in door.
- Identify which side of the door each lever assembly will need to be located in order to allow both levers to move in a downward motion once installed.
- Remove rosette covers (2) from both lever assemblies.
- Place one lever assembly (3) onto the square drive spindle.
- Place other lever assembly (4) into position, locating it onto the other end of spindle.
- Fasten both lever assemblies together with screws provided (5):  
Use long screws for thick doors and short screws for thin doors. Each under-rose features a countersunk hole and a threaded hole. Install one screw from either side, through the countersunk hole, through the latch and into the threaded hole of the opposite under-rose. Then tighten the screw head on each side.
- Tighten the grub screws (6) at base of levers on both sides with the hexagonal key (7) provided.
- Re-apply rosette covers (2) to both under-roses by pushing the covers over the rubber rings until flush with door.



**NOTE:** Carefully follow these instructions when installing.  
Screws to be tightened to a recommended 2.5Nm torque.



Mark centre-line  
of latch hole

Mark centre-line  
of latch hole

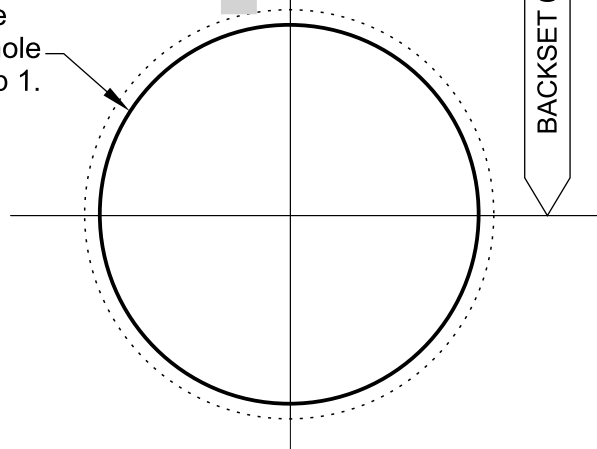
FOLD HERE

Fit here on door edge

Fit here on door edge

50mm hole  
or 54mm hole  
- refer Step 1.

BACKSET 60mm (2 3/8")



Suits doors 32mm (1 1/4")  
to 45mm (1 3/4") thick.

**Installation template  
for passage applications**



**ALLEGION**

1800 098 094

info.au@allegion.com  
gainsboroughhardware.com.au

