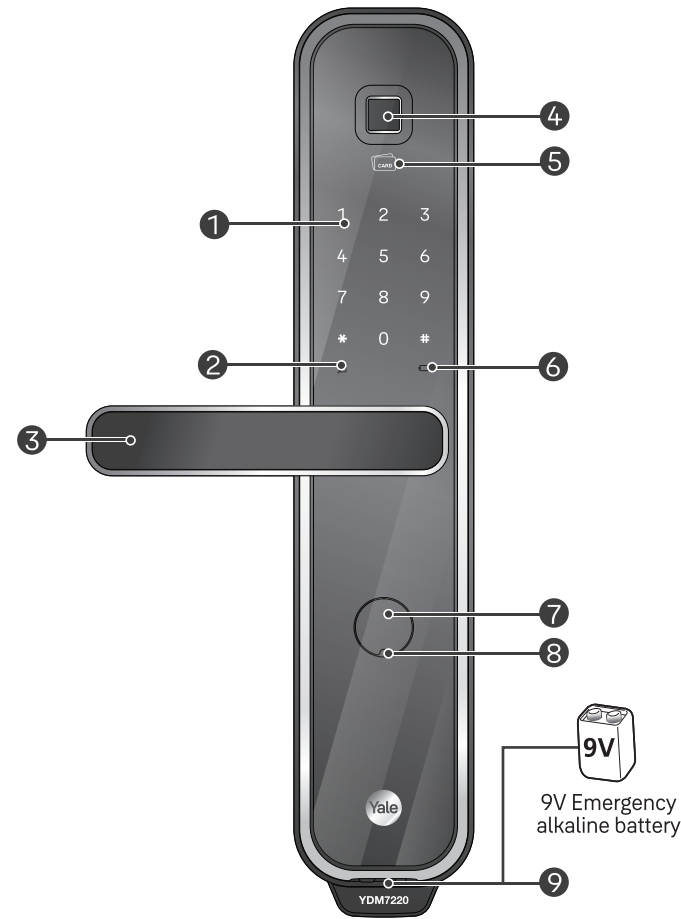


1. External Body (External Body, installation on the outside of the door)



2. Basic Contents

Basic Contents

External Body

Internal Body

Mortise Lock

Strike Plate

- User Manual
- Installation Guide
- RFID Key Tags X 4
- Mechanical Keys X 2
- Screws

- Remote Controller
- Remote Control Module
- Bluetooth Module
- AA Batteries X 4

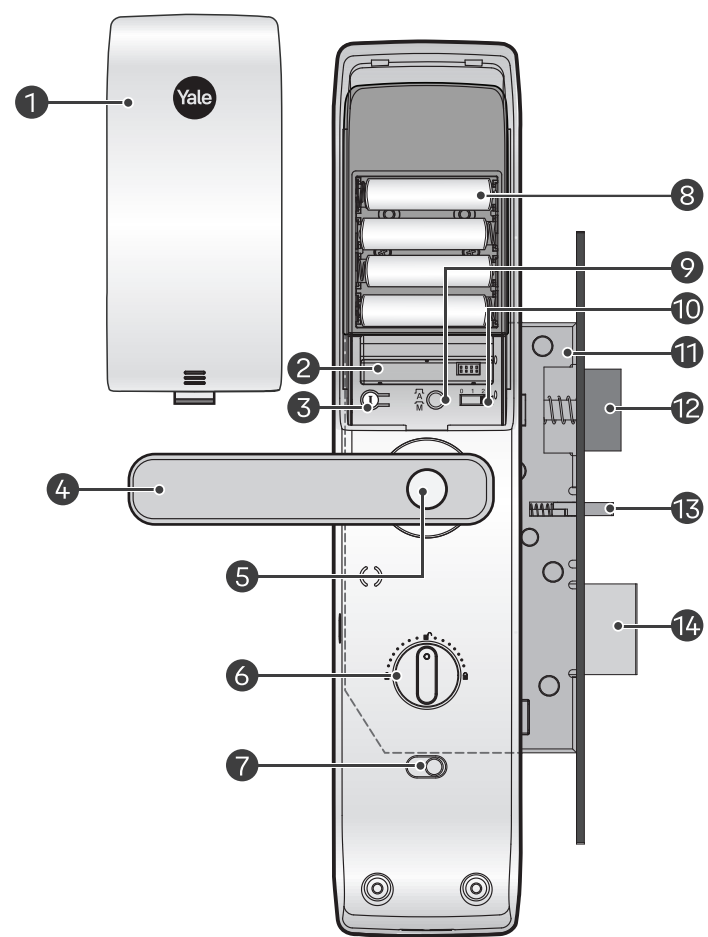
3. Specifications

Parts	Specifications	Remarks
External Body	68(W) X 335(H) X 26.5(D) mm	Operating temperature -15~55°C (5~131 °F)
Internal Body	72(W) X 344(H) X 36(D) mm	
Works for	4x 1.5V AA Alkaline batteries (Operating voltage: 4.5~6V)	
Optional product	Remote controller, Module and etc.	

※ Battery life may vary depending on temperature, moisture levels, frequency of use and the quality of battery used. Estimated battery life expectancy of 1 year (lock is used 10 times per day).

※ Optional products may not be available depending on your country or local dealer.

4. Internal Body (Internal Body, installation on the inside of the door)



5. External Body

1	Keypad(10-key)
2	Dead Bolt Jam Indicator
3	Lever
4	Fingerprint Sensor
5	RFID Key Tag Reader
6	Low Battery Indicator
7	Emergency key cover
8	Emergency Mechanical Key Slot (Inside)
9	Emergency Power Supply Terminal

6. Internal Body

1	Battery Cover
2	Module Accessory Slot (Optional)
3	① Registration button
4	Lever
5	Safe Handle Button
6	Manual Thumb Turn
7	Internal Forced Lock Switch
8	1.5V AA Alkaline Batteries (4PCS)
9	Auto/Manual Lock Button
10	Volume Control Switch
11	Mortise Lock
12	Latch Bolt
13	Automatic Locking Sensor
14	Dead Bolt

7. Setting Menu

**Normal Mode:** Anyone who knows 'User PIN Code' has authority to set features.

**Advanced Mode:** Only the person who knows 'Advanced PIN Code' has authority to set features.

**Visitor Code:** Users with Visitor Code can only open the door with no access to change settings.

**Onetime Code:** The onetime code is used only once for unlocking the door lock and automatically deleted after usage.

**User Slot Number:** It should be 2 digits(like '01', '02'...'99', '00') and available in advanced mode.

	Touch the Keypad of the Front Body with your palm to begin
	Press  button on the Keypad
	Press  button on the Keypad
	Press  (Registration) button in every steps to start or complete the session
	Enter User RFID Key Tag (Up to 100 Users)
	Enter User Fingerprint (Up to 100 Users)
	Enter User Code (4 ~ 10 digits)
	Enter Advanced Code (4 ~ 10 digits)
	Enter Visitor Code (4 digits)
	Enter Onetime Code (4 digits)
	User Slot Number should be 2 digits (like '01' ... '99' and '00'; Location of 100th user slot must be assigned "00" instead of "100". )

8. Product Features

**One Touch Fingerprint Access** .....  
Fingerprint detection for personalised access. Unique Sensor not only provides high security but faster unlocking experience as well.

**Smart Touchpad – Auto Lock** .....  
The door Locks when you touch the palm on the keypad.

**3 minute Lock Out Feature** .....  
After five(5) unsuccessful attempts at entering an invalid code or RFID Key Tags, 3minute Lock out mode will be activated.

**Smart Etiquette** .....  
When entering a pin code on the keypad, the user can open the door lock in silent mode.

**Fake PIN Code** .....  
Users can hide their pin code by either entering a series of digits at the beginning or after their pin code. thus, the pin code is not exposed.

**Internal Forced Lock** .....  
It is a security-enhancing function that 'disables' authentication methods such as passwords, RFID key tags and fingerprints from outside when setting up functions indoors.

**External Forced Lock** .....  
It is a security-enhancing function that an alarm goes off if someone opens door from inside when setting up functions outside.

**Voice Guidance** .....  
It guides you through the operation status on how to enable various features & settings- mode for easier and more convenient use.

**Safe Handle** .....  
This feature can help prevent small children exiting the home without permission..

**Other features and Benefits** .....  
• Remote Controller (Optional):  
This option may not be available depending on your country or local dealer.

• Network Module/Controller (Optional):  
It allows door lock to connect with Home network controller.

• Intrusion/Broken Alarm.

• Low Battery Alarm and Emergency Power Supply.

• Yale Network Module.

**Yale Access App** .....  
Yale Access gives you the peace of mind of knowing who and what you love is safe - no matter where you are- just at the touch of your smartphone.

9. Normal Mode (Default Mode)

Normal mode is for convenient mode for anyone with user code to change various settings.

(Registration steps)			" * Continue / ① Complete "		
<b>User Code 1</b> (Avoid to set up sequenced numbers e.g. 1,2,3,4)					Only 1 User
Registr-ation		New			
<b>RFID Key Tag 2</b>					Up to 100 Users
Registr-ation					
<b>Fingerprint 2</b>					Up to 100 Users
Registr-ation			8times	OR	
<b>Visitor Code 2</b>					Only 1 User
Registr-ation					
Delete					
<b>Onetime Code</b>					Only 1 User, Automatically deleted after use
Registr-ation					
Delete					
<b>Delete all credentials (Fingerprint, RFID Key Tag)</b>					
Delete all finger-print					
Delete all RFID Key Tag					

Language Change	
Registr-ation	
<b>Remote Control Registration 3</b>	
Registr-ation	
Delete	
<b>Home Network Control Registration 3</b>	
Registr-ation	
Delete	

**Remote Control Registration**  
Set with registration button located on the top of remote controller. You can press it using a pin like the one shown in the image.

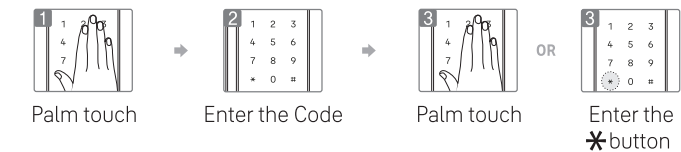
**Please note following when pairing lock with Yale Access App.**

1 Because Yale Access App is only available in advanced mode.

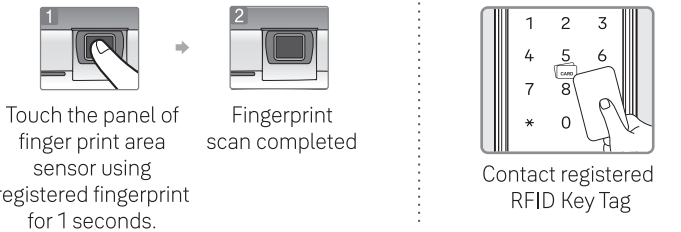
2 Please be informed that all registered credentials will be deleted when changing mode or registering and deleting app.

3 Depending on product type or Firmware version, app registration and door lock connection in normal mode may not be possible, so if registration is not possible, change from normal mode to advanced mode and try again.

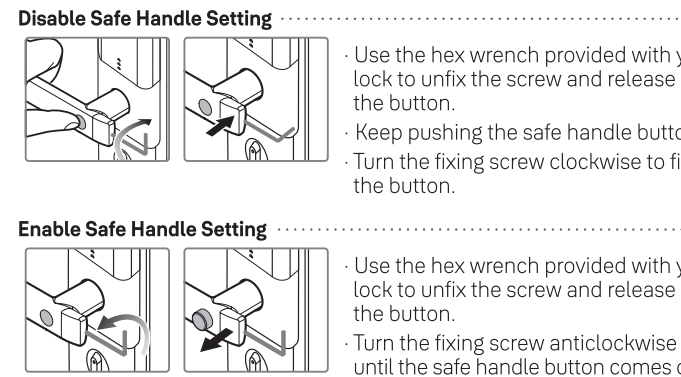
10. Unlocking Door with Code



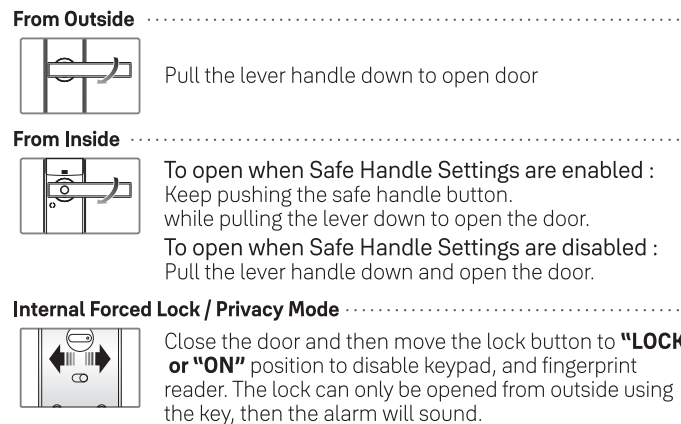
11. Unlocking Door with Fingerprint / RFID Key Tag



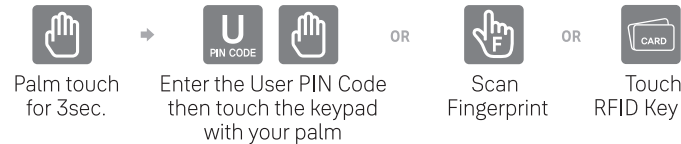
12. Safe Handle Feature



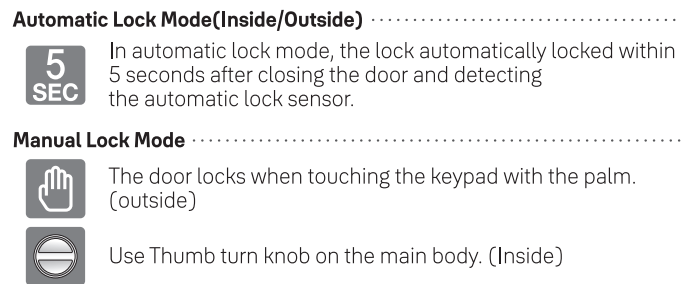
13. Opening Door(Inside/Outside)



14. Unlocking Door with Smart Etiquette



15. Locking the Door(Inside/Outside)



**Enable Automatic Lock** .....  
 Release the button to set automatic lock mode on the internal Body (after opening the battery cover).

**Enable Manual Lock** .....  
 Press the button to set manual lock mode on the internal Body.

Diagram illustrating the authentication process:

- Method 1:** Palm touch → Enter the user code and fake code.
- Method 2:** Enter the Fake Code and User code → Palm touch.

**Enable External Forced Lock : Fingerprint** .....

 Scan with registered Fingerprint and hold the fingerprint area until you hear 3 beep sounds.

Palm touch → Enter the User PIN Code → Enter the # button for 5 Sec.

 Contact RFID key tag on [RFID key tag reader] for 5 sec. until you hear 3 beeps.

To disable the External Forced lock enter the pin code, present a registered card or unlock the door using fingerprint.  
If the internal Lever is turned to open the door from inside, the alarm will sound.

The operation sound volume will be adjusted according to the Volume Switch setting.

0 1 2 : High

0 1 2 : Low

0 1 2 : Mute

**20. 3 Minute Lock Out**



All access mode from the external side are disabled for 3 minutes to deter unauthorized access.

- Open with inside door bar.
- Open the door with mechanical key.
- Press **I** button.

**Intrusion Alarm :** The alarm goes off when someone forces the door open. For example, In case of an intrusion by opening a gap in the door while the door is locked.

**Broken Alarm(Breakage Alarm)** : The alarm goes off when the front part is completely separated from the main set. For example, forced removal of external product (External Body).

- Enter the registered User code.
- Press **(I)** button for 5 seconds.
- Enter the registered Fingerprint.
- Touch the registered RFID Key Tag.





 OR
 
 OR
 

Contact 9V battery      Palm touch      Enter the User Code and Plam touch      Contact RFID Key Tag      Scan fingerprint

**One-on-one real life size**  
1.5V(LR6) Alkaline AA Battery

It may sustain 1 year if used 10 times a day. (Users are advised to use authentic Alkaline batteries.)  
\* Kindly dispose used batteries.

- \* The Low Battery LED on keypad flickers red.
- \* When low battery notification message is played.

RISK OF EXPLOSION IF BATTERY IS REPLACED BY AN INCORRECT TYPE. DISPOSE OF USED BATTERIES ACCORDING TO THE NATIONAL CODE OR RECYCLING PROGRAM.



USE ONLY **ALKALINE** BATTERIES

DO NOT USE LITHIUM OR RECHARGEABLE BATTERIES  
BECAUSE THEY MAY CAUSE THE LOCK TO MALFUNCTION

## 24. Code Chart Duplicate if necessary

[illegible]

Advanced mode is a mode in which only the administrator can set the door lock and provide access to other users. 100 users passwords, 100 users RFID key tags, 100 users fingerprint and individual registration and deletion of one-time passwords enable efficient management of visitors.

(Registration steps) "✱ Continue / ① Complete"

### Switch to advanced mode (from normal mode) 1 2

Change Mode			4	#	1	#	A rfid code New	#	A rfid code Again	
-------------	--	--	---	---	---	---	-----------------------	---	-------------------------	--

### Advanced Code Change

Only 1 User

Registration			1	#	A rfid code New	#	A rfid code Again	#	* OR	
--------------	--	--	---	---	-----------------------	---	-------------------------	---	------	--

### User Code

Up to 100 Users

Registration			2	#	1	#	UN	#	U rfid code	#	* OR	
Delete					3	#	UN	#	*	OR		

### Fingerprint

Up to 100 Users

Registration			3	#	1	#	UN	#		8times	* OR	
Delete					3	#	UN	#	*	OR		

### RFID Key Tag

Up to 100 Users

Registration			3	#	2	#	1	#	UN	#	CARD	#	* OR	
Delete					3	#	UN	#	*	OR				

### Overtime Code

Only 1 User, Automatically deleted after use

Registration			4	#	1	#	0 rfid code	#	*	OR	
Delete					3	#	A rfid code	#	*	OR	

Registr-ation   5    \* or 

Registration	A	1	6	#	5	#	1	Korean	#	*	OR	1	
								2	Chinese	#	*	OR	1
								3	English	#	*	OR	1
								4	Taiwanese	#	*	OR	1

Registr -ation
 

Set up a new device in the app

Registration							Control			OR	
Delete										OR	

Change Mode

A PEN CODE	I	G	#	7	#	U New PEN CODE	#	U Again PEN CODE	I
---------------	---	---	---	---	---	----------------------	---	------------------------	---

※ **UN** User Slot Number should be 2 digits.  
like '01' ... '99' and '00': Location of 100th user slot must be assigned  
"00" instead of "100".

1 Avoid to set up sequenced numbers e.g. 1,2,3,4)

**3** If you have previously setup PIN codes, Fingerprints or Key tags to the lock, the registration of Yale Access Module will erase them all but the Master Pin Code. They must be registered again via Yale Access app.

Do not spray water directly or wipe with chemicals such as benzene, gasoline or alcohol.

Do not use force with a tool onto the product.

When using, remember that someone else can see the password.

Make sure the door is closed properly when going out.

- For use on residential entry doors. Not to be used where the internal escutcheon will be exposed to outdoor elements (e.g. on a gate).
- Do not attempt to disassemble the digital door lock by yourself. By doing so, you may get an electric shock and damage the product.
- Do not use force with a tool onto the product.
- Make sure to lock the door tight when you go out.
- Be careful not to hit the handle as it may cause injuries.

Do not use water and any type of solvent to clean the product such as gasoline or benzene as they can cause damage to electronic circuit, deterioration and or paint peel-off.

- It is recommended to change User Code on a regular basis.
- In manual lock mode, make sure to double check whether the door is securely locked.

When External Forced lock is set and unlock the door, the alarm will be activated.

- Do not use lithium or rechargeable batteries. Only alkaline batteries are recommended.

- Make sure to follow the above instructions to avoid any injuries.

It cannot be guaranteed in special conditions & environment such as water condensation, seaside.

Warranty will not cover- exposure to dampness, excessive heat, excessive humidity and other extreme environmental conditions, corrosion, damage beyond repair, rusting, unauthorised modifications, unauthorised repairs, neglect, accident, alteration, natural disaster, spillage of liquid or food particles.



RFID Key Tag / Fingerprint / PIN Code / Key

Part of ASSA ABLOY



PLEASE READ INSTRUCTIONS BEFORE USE.  
The functions and design of this product can be changed  
without prior notice for performance and quality improvement.

ISL-1857-00-00X